

THE BOROUGH OF STOCKTON-ON-TEES  
 BARLEY FIELDS AND ST THERESE OF LISIEUX, INGLEBY BARWICK  
 SCHOOL TIME WAITING RESTRICTIONS ORDER 2017

Notice is hereby given that Stockton-on-Tees Borough Council propose to make an Order under Sections 1, 2 and 4 of the Road Traffic Regulation Act 1984 and of all other enabling powers, and after consultation with the Chief Officer of Police in accordance with Part III of Schedule 9 to the Act.

The Order will have the effect of prohibiting any vehicle waiting and loading or unloading goods or passengers on the lengths of roads described in the Schedule below between 8.00am and 9.30am and between 2.30pm and 4pm.

Full details of the proposals are contained in the draft Order which, together with a map showing the affected road and a statement of the Council's reasons for proposing to make the Order, may be examined at the Stockton Customer Service Centre, Central Library, The Square, Stockton-on-Tees during normal office hours and on the Council's website (search for traffic orders). If you wish to object to the proposed Order you should send the grounds for your objection in writing to Traffic & Network Safety Manager, Network Safety Team, Stockton on Tees Borough Council, PO Box 229, Kingsway House, West Precinct, Billingham, TS23 2YL or [EGDS@Stockton.gov.uk](mailto:EGDS@Stockton.gov.uk) by 20<sup>th</sup> July 2017.

**SCHEDULE**

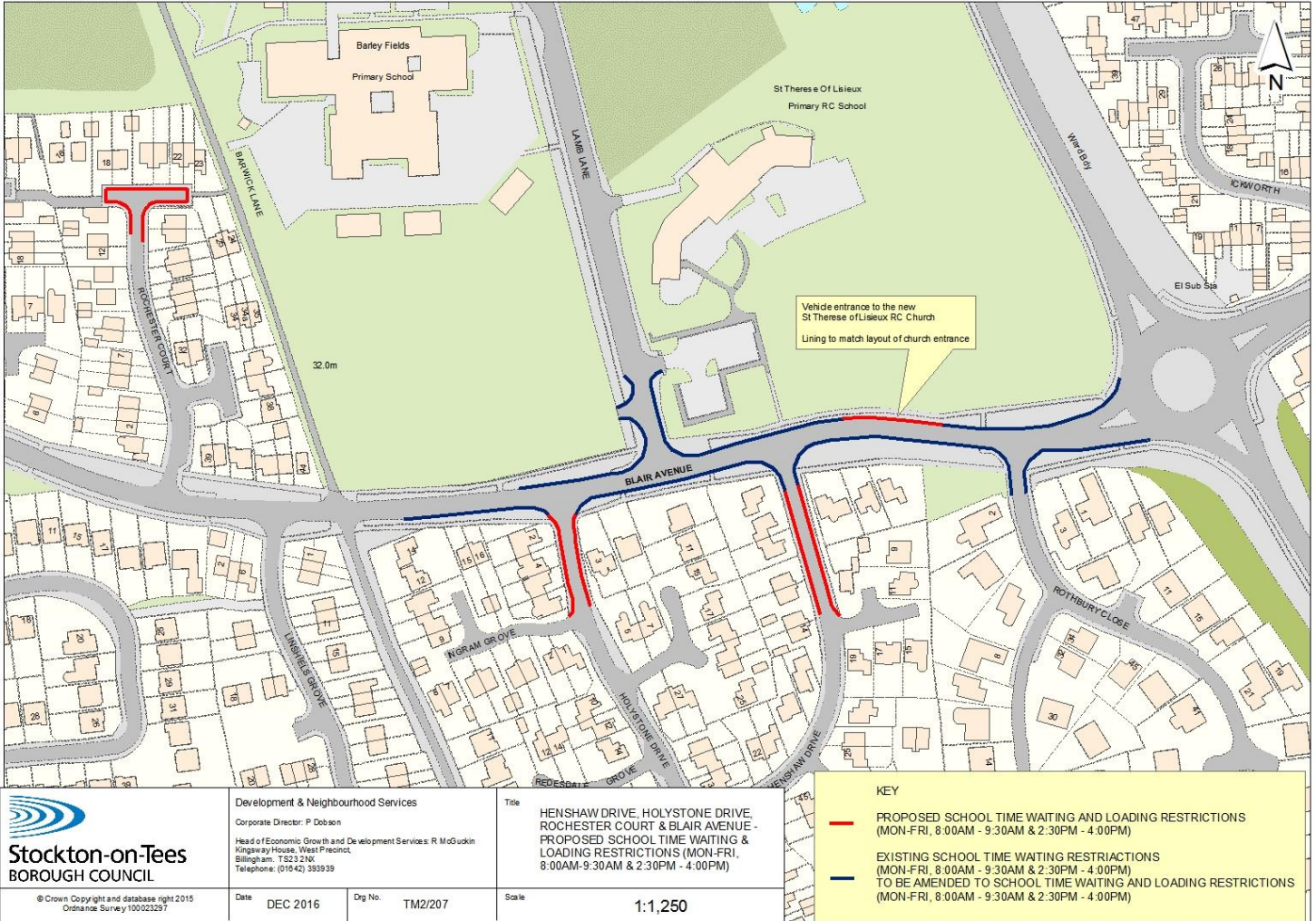
**No waiting 8.00am to 9.30am and 2.30pm to 4pm**

Blair Avenue, Ingleby Barwick (north side)	From its junctions with the Barwick Way roundabout in an westerly for a distance of approximately 256 metres.
Blair Avenue, Ingleby Barwick (south side)	From its junctions with the Barwick Way roundabout in an westerly for a distance of approximately 285 metres.
Rothbury Close, Ingleby Barwick (both sides)	From its junction with Blair Avenue for a distance of approximately 10 metres in a southerly direction.
Henshaw Drive, Ingleby Barwick (east side)	From its junction with Blair Avenue for a distance of approximately 67 metres in a southerly direction.
Henshaw Drive, Ingleby Barwick (west side)	From its junction with Blair Avenue for a distance of approximately 64 metres in a southerly direction.
Holystone Drive, Ingleby Barwick (east side)	From its junction with Blair Avenue for a distance of approximately 41 metres in a southerly direction.
Holystone Drive, Ingleby Barwick (west side)	From its junction with Blair Avenue for a distance of approximately 44 metres in a southerly direction.
Lamb Lane, Ingleby Barwick (both sides)	From its junction with Blair Avenue for a distance of approximately 35 metres in a northerly direction.
Rochester Court, Ingleby Barwick (north side)	Full width, a distance of approximately 32 metres.
Rochester Court, Ingleby Barwick (east side)	From a point approximately 95 metres north of its junction with Blair Avenue in a northerly direction for a distance of approximately 21 metres.

Rochester Court, Ingleby Barwick  
(west side)

From a point approximately 96 metres north of its junction with Blair Avenue in a northerly direction for a distance of approximately 18 metres.

Dated 29<sup>th</sup> June 2017



**Stockton-on-Tees**  
BOROUGH COUNCIL

© Crown Copyright and database right 2015  
Ordnance Survey 100023297

Development & Neighbourhood Services  
Corporate Director: P Dobson  
Head of Economic Growth and Development Services: R MoGulkin  
Kingway House, West Precinct  
Bilingham, TS22 2JW  
Telephone: (01642) 393939

Date: DEC 2016

Dwg No. TM2/207

Title: HENSHAW DRIVE, HOLYSTONE DRIVE, ROCHESTER COURT & BLAIR AVENUE - PROPOSED SCHOOL TIME WAITING & LOADING RESTRICTIONS (MON-FRI, 8:00AM-9:30AM & 2:30PM - 4:00PM)

Scale: 1:1,250

KEY

- PROPOSED SCHOOL TIME WAITING AND LOADING RESTRICTIONS (MON-FRI, 8:00AM - 9:30AM & 2:30PM - 4:00PM)
- EXISTING SCHOOL TIME WAITING RESTRICTIONS (MON-FRI, 8:00AM - 9:30AM & 2:30PM - 4:00PM) TO BE AMENDED TO SCHOOL TIME WAITING AND LOADING RESTRICTIONS (MON-FRI, 8:00AM - 9:30AM & 2:30PM - 4:00PM)